

# CERTIFICATE OF LOCATION OF GOVERNMENT CORNER

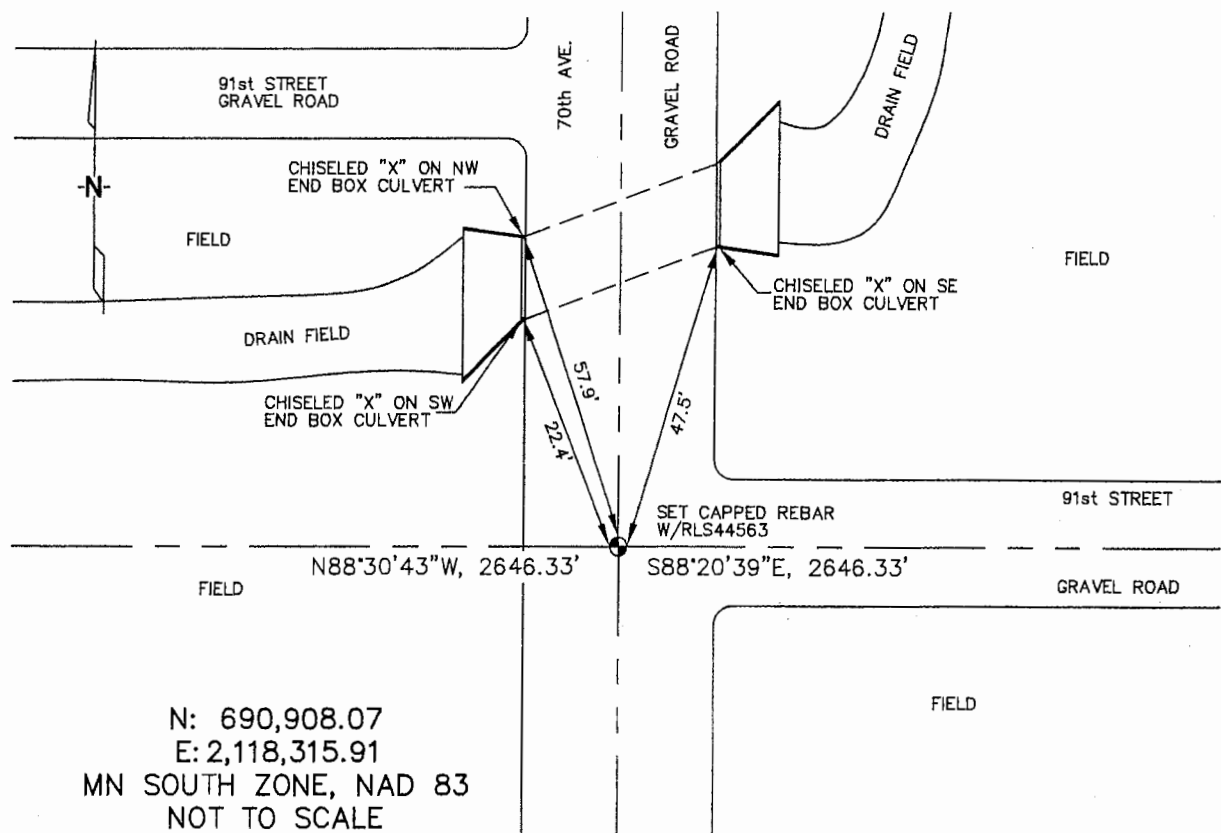
NORTHWEST Corner of Section 20, Township 106, Range 42, 5TH P.M.

STATE OF MINNESOTA, County of MURRAY

At the corner location shown on the sketch :

- On \_\_\_\_\_ found \_\_\_\_\_
- left monument as found,  lowered monument,  removed monument (explain)
- On 3/21/2006 set 5/8" REBAR WITH CAP: RLS 44563.

Sketch of reference ties



Statement of evidence relative to this corner location is on back page

I hereby certify that this document and the data contained herein was prepared by me or under my direct supervision.

Thomas V. Zeff 5/26/06  
 Thomas V. Zeff Date  
 Registration No. 44563

- Land Surveyor,  Professional Engineer
- County Surveyor,  County Engineer

## OFFICE OF THE COUNTY RECORDER

County of \_\_\_\_\_

**SEP 28 2006**

I hereby certify that this document was filed in the Co. Recorders office at \_\_\_\_\_ M. on the \_\_\_\_\_ day of \_\_\_\_\_ A.D., 20

County Recorder James V. Johnson  
 By \_\_\_\_\_, Deputy

DOCUMENT NO. \_\_\_\_\_

STATEMENT OF EVIDENCE:

NORTHWEST CORNER, SECTION 20, T. 106 N., R. 42 W.,  
MURRAY COUNTY, MINNESOTA

- 1866 J.W Bishop, US. Deputy Surveyor, monumented corner.
- 3/21/2006 Ulteig Engineers, Inc., Survey Crew, Brian Payne Party Chief,  
found nothing. Set a 5/8" rebar with cap: RLS 44563.  
Ties: NW-22.4' to chiseled "X", top, SW corner, box culvert;  
NW-57.9' to chiseled "X", top, NW corner, box culvert;  
NE-47.5' to chiseled "X", top, SE corner, box culvert;  
E-2646.33' to North 1/4 corner, Section 20;  
W-2646.33' to North 1/4 corner, Section 19.